

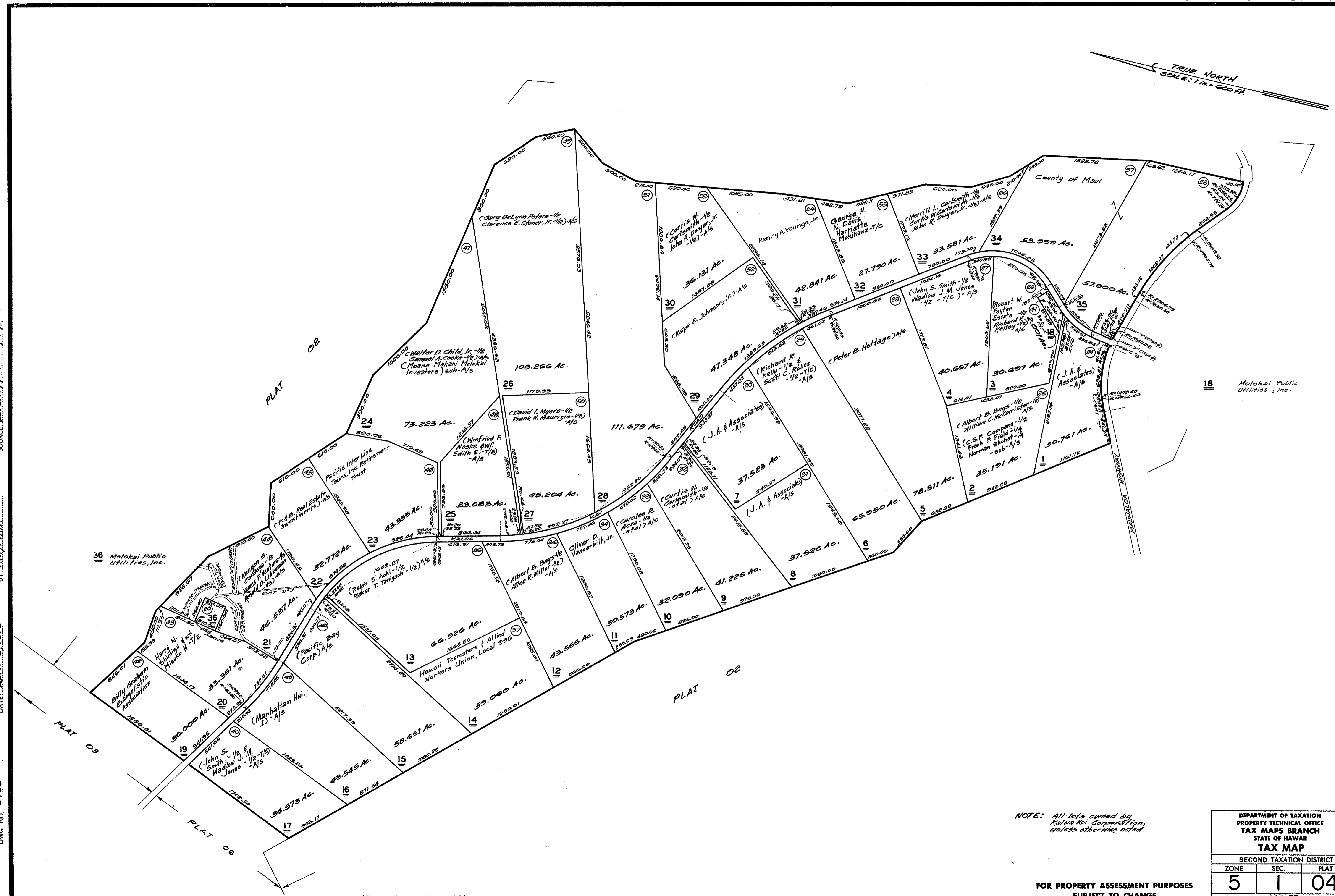
DATE: APR 15 1979

SOURCE: L.D. CT. APP. 1683, MAP 8

BY: S. T. F. M. A.

DATE: APR 15 1979

DWG. NO. 5498



36 Molokai Public Utilities, Inc.

18 Molokai Public Utilities, Inc.

NOTE: All lots owned by Kula Kai Corporation, unless otherwise noted.

DEPARTMENT OF TAXATION PROPERTY TECHNICAL OFFICE TAX MAPS BRANCH STATE OF HAWAII		
TAX MAP		
SECOND TAXATION DISTRICT		
ZONE	SEC.	PLAT
5	1	04
SCALE: 1 IN. = 600 FT.		

FOR PROPERTY ASSESSMENT PURPOSES
SUBJECT TO CHANGE