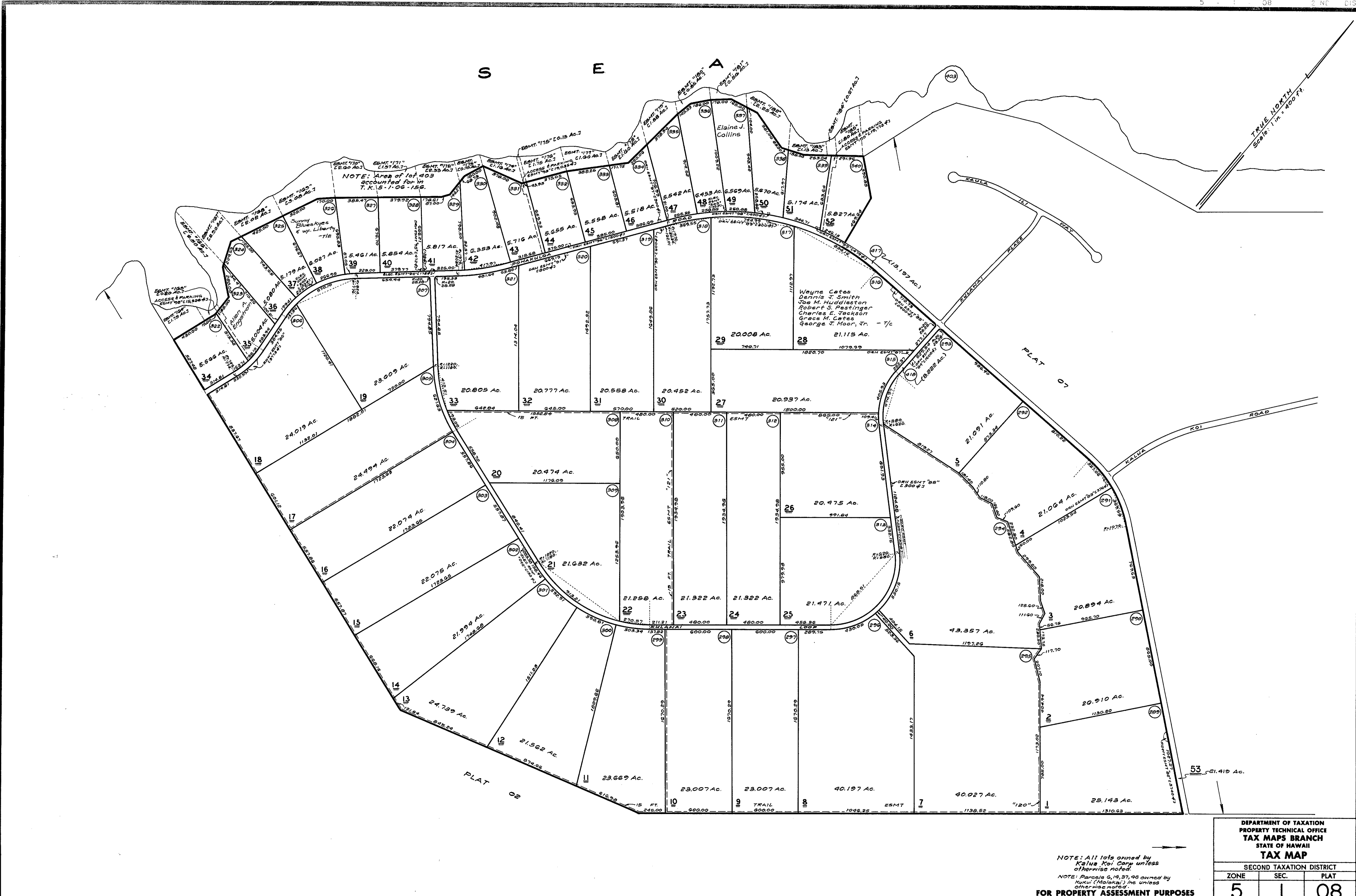


DVG. NO. 6633 DATE: JAN. 7, 1988 BY: M.A./G.S. SOURCE: LD. CT. APP. 1683, MAP 19



LD. CT. APP. 1683, MAP 19, KALUAKOI & ILOLI, MOLOKAI, HAWAII (Formerly por. 5 - 1 - 02)

NOTE: All lots owned by Kalua Koi Corp unless otherwise noted.
 NOTE: Parcels 6, 14, 37, 48 owned by Kupu (Maioke) Inc unless otherwise noted.
FOR PROPERTY ASSESSMENT PURPOSES
SUBJECT TO CHANGE

DEPARTMENT OF TAXATION
 PROPERTY TECHNICAL OFFICE
TAX MAPS BRANCH
 STATE OF HAWAII
TAX MAP

SECOND TAXATION DISTRICT		
ZONE	SEC.	PLAT
5	1	08

SCALE: 1 IN. = 400 FT.