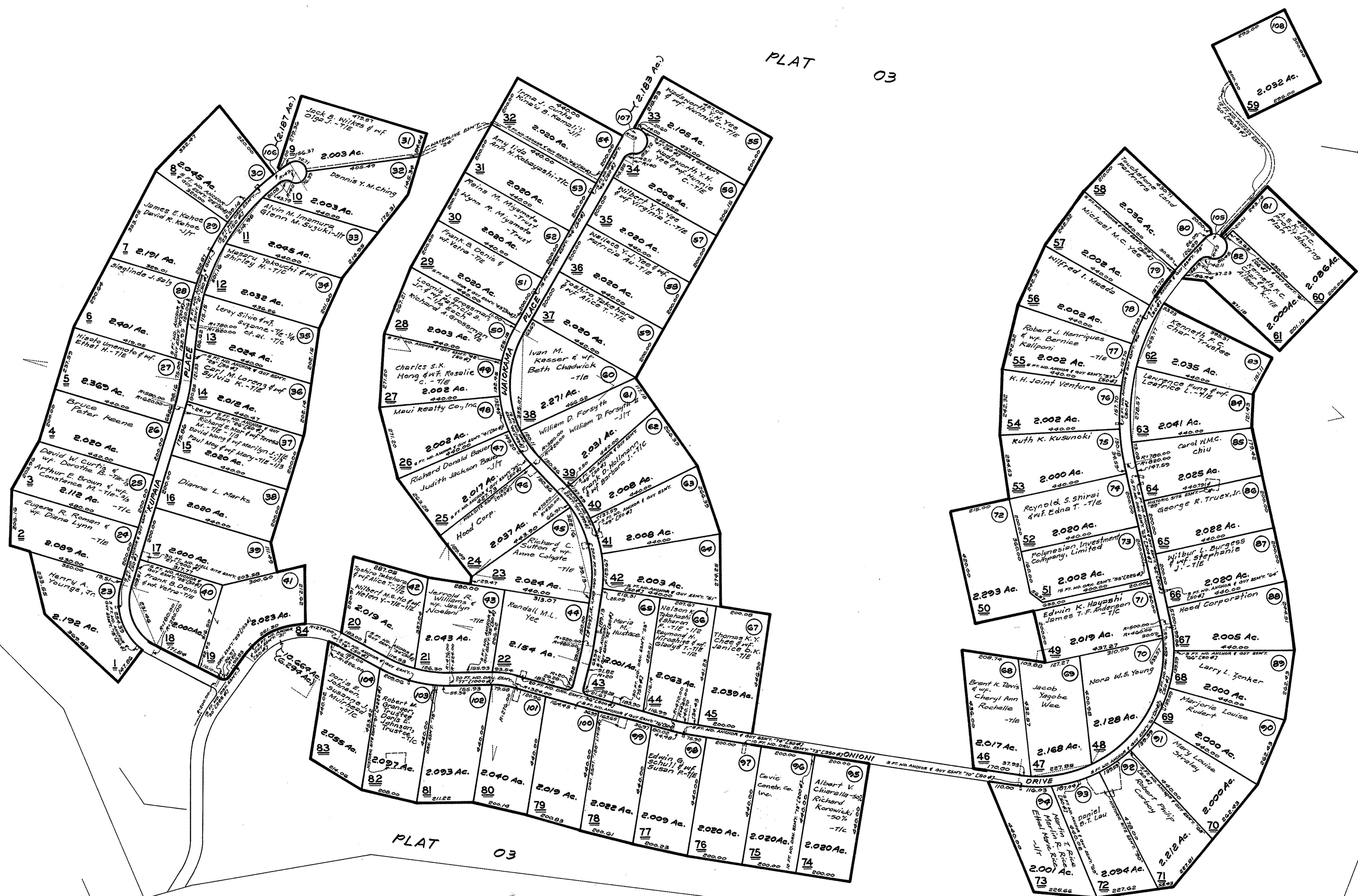


BY: M.K. - M.H. DATE: JUNE 9, 1981 DWG. NO. 6508

PLAT 03

PLAT 01



NOTE: Parcels 23, 4, 16, 21, 23, 25, 39, 39, 41, 43, 46, 47, 55, 73, 74, 75, 76 & 82 is owned by Cooke Land Company, Inc. unless otherwise noted.

NOTE: All lots owned by Kawela Plantation Development Associates unless otherwise noted.

FOR PROPERTY ASSESSMENT PURPOSES SUBJECT TO CHANGE

DEPARTMENT OF TAXATION PROPERTY TECHNICAL OFFICE TAX MAPS BRANCH STATE OF HAWAII TAX MAP		
SECOND TAXATION DISTRICT		
ZONE	SEC.	PLAT
5	4	14
SCALE: 1 IN. = 200 FT.		